



Capital Strategies (K) Ltd.

# COMPANY PROFILE

**Training**

**Business Mentorship**

**Monitoring & Evaluation**

**Business Development Services**



# TABLE OF CONTENTS

- 01 The Company**
- 02 Our Core Values**
- 03 The Team**
- 04 Our Services**
- 05 Our Clients**



# OUR COMPANY

Established in 2006, Capital Strategies (K) Ltd has evolved into a prominent firm specializing in business training and consultancy services. We are a registered corporate member with the Kenya National Chamber of Commerce and Industry, holding NITA number NITA/TRN/892, showcasing our commitment to expertise.

Our core areas of focus include Training, Business Mentorship, Monitoring and Evaluation, and a range of innovative Business Development Services tailored to specific sectors. Committed to serving individuals, businesses, and organizations, our reach extends beyond Kenya to address the needs of a global clientele.

# VISION & MISSION



## VISION

Transformed lives  
impacting the world



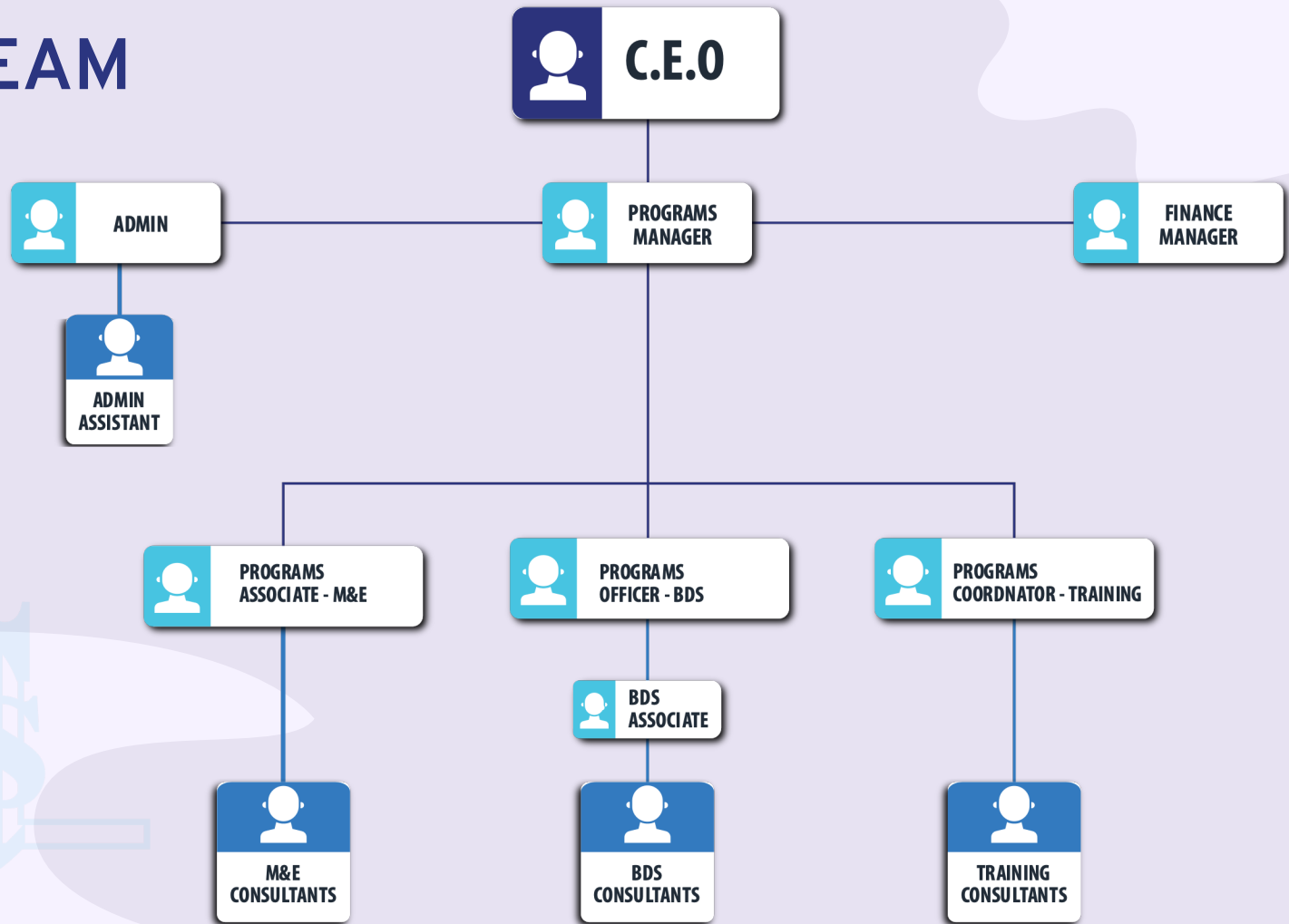
## MISSION

We transform lives by delivering Innovative-Sector based Business Development Services and Monitoring & Evaluation solutions to individuals and organizations.

## OUR CORE VALUES

- **Consistency**
- **Integrity**
- **Competence**
- **Empowerment**

# THE TEAM



A photograph of two people in business suits shaking hands, with a blurred city building in the background. A dark blue semi-transparent overlay covers the left and bottom portions of the image. In the top-left corner of the overlay is a light blue rounded rectangle with a white border. In the bottom-left corner is a dark blue rounded rectangle with a white circular outline.

# OUR SERVICES



# TRAINING SERVICES

We provide Training Services to Individuals, Businesses and Organizations. We are registered by the National Industrial Training Authority (NITA) as a Training Services Provider NITA/TRN/892 in addition to being a Partner Organization for the ILO/Start and Improve Your Business (SIYB) Programme. Our training services include the following courses:

- **Entrepreneurship Skills Development;**
- **Business Plan Development and Business Plan Assessment;**
- **Leadership, Group Dynamics, Management and Project Governance;**
- **Financial Literacy Skills;**
- **Business Records and Financial Management Skills;**
- **Fundraising and Investor Readiness;**
- **Business Costing and Pricing Strategies;**
- **Team Building Activities;**

# MONITORING & EVALUATION

We offer Monitoring and Evaluation, Value Chain Studies, Market Assessments services as follows:

- **Project Baseline Surveys;**
- **Project Mid - Term reviews;**
- **Project End - Term reviews;**
- **Project Impact Assessment Studies;**
- **Project Completion Reports (PCRs);**
- **Project Final Evaluations;**
- **Value Chain Studies;**
- **Market Assessments;**
- **Business Surveys-**
- **Training Needs Assessment**





# BUSINESS MENTORSHIP

We provide Business Mentorship Services to individuals and businesses, to unlock business growth and to sustainably improve and support clients to grow and expand their businesses.

Our services include:

- Business Gap Analysis;
- One to One Coaching;
- Group Coaching/Peer to Peer Mentorship;
- Technical Assistance and Support;
- Business Clinics



# Our Business coaching and mentorship Approach



# Business Development Services

We provide other Business Development Services to individuals, businesses and organizations as follows:

- Strategic Plan Development;
- Business Plan Development;
- Market Linkages;
- Financial and Investments support;
- Institutional Strengthening Programmes



# OUR CLIENTS

“Excellent customer service is the number one job in any company! It is the personality of the company and the reason customers come back.

Without customers there is no company”



# OUR CLIENTS



Implemented by



Poverty Reduction Through  
Sustainable NRM





# OUR CLIENTS



Kenya



KCEP-CRAL



KENYA CEREAL ENHANCEMENT PROGRAMME -  
CLIMATE RESILIENT AGRICULTURAL LIVELIHOOD(WINDOW)



# OUR CLIENTS



U.S. Africa Development Foundation in  
Partnership with HLB Cezam



International Organization for Migration (IOM)



# OUR CLIENTS



THE COMPANIONSHIP OF WORKS ORGANIZATION



International  
Labour  
Organization



banyan  
global





**Capital Strategies (K) Ltd.**

**Do you have any questions?**

Contact us on

[info@capitalstrategies.co.ke](mailto:info@capitalstrategies.co.ke)

+254 707224741

<https://capitalstrategies.co.ke/>

